

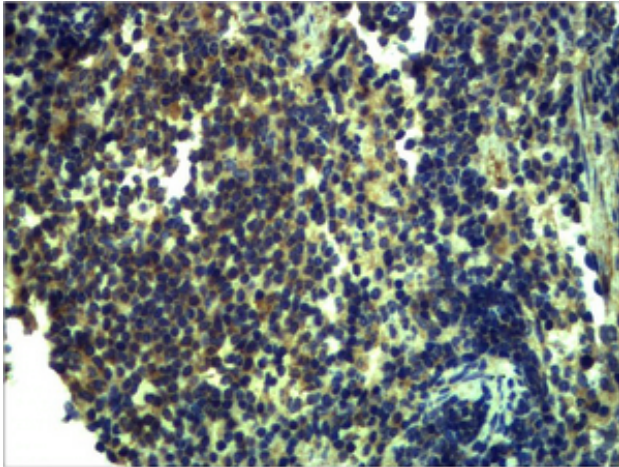


# TLR13 Polyclonal Antibody

<b>Catalog No</b>	YP-Ab-01186
<b>Isotype</b>	IgG
<b>Reactivity</b>	Human;Mouse;Rat
<b>Applications</b>	IHC;IF
<b>Gene Name</b>	TLR13
<b>Protein Name</b>	Toll-like receptor 13
<b>Immunogen</b>	Recombinant Protein of TLR13
<b>Specificity</b>	The antibody detects endogenous TLR13 protein.
<b>Formulation</b>	PBS, pH 7.4, containing 0.5%BSA, 0.02% sodium azide as Preservative and 50% Glycerol.
<b>Source</b>	Polyclonal, Rabbit,IgG
<b>Purification</b>	The antibody was affinity-purified from rabbit antiserum by affinity-chromatography using epitope-specific immunogen.
<b>Dilution</b>	IHC: 1:200-500. IF 1:50-200
<b>Concentration</b>	1 mg/ml
<b>Purity</b>	≥90%
<b>Storage Stability</b>	-20°C/1 year
<b>Synonyms</b>	YM3389
<b>Observed Band</b>	
<b>Cell Pathway</b>	
<b>Tissue Specificity</b>	
<b>Function</b>	
<b>Background</b>	The TLRs form a family of ligand-binding proteins that engage a variety of microbial products, that on binding, activate signaling cascades leading to the synthesis of proinflammatory molecules. TLR13 is found in mouse and participates in the innate immune response to microbial agents. It acts via MYD88 and TRAF6, leading to NF-kappa-B activation, cytokine secretion and the inflammatory response.
<b>matters needing attention</b>	Avoid repeated freezing and thawing!
<b>Usage suggestions</b>	This product can be used in immunological reaction related experiments. For more information, please consult technical personnel.



## Products Images



Immunohistochemical analysis of paraffin-embedded Mouse Spleen Tissue using TLR13 Polyclonal Antibody.